



EXCELLENCE. ENGAGEMENT. EQUITY.

HILL

CAMPUS OF ARTS & SCIENCES

Adjusted Safety Procedures

Return to School Resources



[Return to School One Pager](#)

[Daily At-Home Health Screener](#)

[Hill Campus Safety Procedures](#)

[Student Safety Video](#)

[Pick-up and Drop Off Procedures](#)

Arriving to School

- ❖ Grade levels will enter into assigned doors for social distancing.

6th Grade - Line up on Blacktop Enter Door 4

7th Grade - Line up on Field, Enter Door 12

8th Grade - Line up on Front Southeast Lawn Enter Door 2

- ❖ While students await to enter the building, proper signage and spacers will be utilized to ensure students do not get too close to their peers. The Student Support team will facilitate the safe movement of each class into the building, encouraging students to maintain 6 feet while en route to their classrooms. Students will move directly to their classrooms with teachers, with no other stops.



Student Screening

- ❖ Students are expected to be screened at home before coming to school grounds
- ❖ [Screening](#) will be completed by parent/guardian at home via the district online symptom screening tool (SafeAccess App) or paper directions before arriving at school site/instruction/activity. On a daily basis, parents should monitor and inquire about symptoms with their student(s).
- ❖ Upon arriving at school, students will be passively screened for symptoms and begin social distancing measures. Social distancing will be maintained for the safety of students and others for the duration of their time on campus.
- ❖ Students *MUST* wear a mask when they arrive at school and for the duration of their time on school campus.



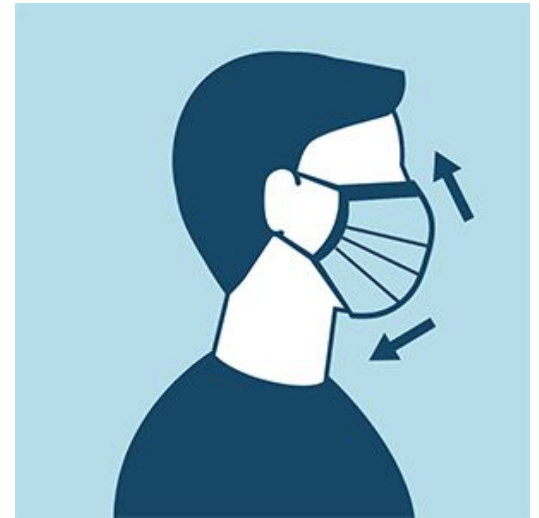
Late Arrivals to School (7:50-8:30am)

- ❖ If you arrive to school just after the first bell has rung you will
 - Line up at the front door while practicing social distancing
 - Show your Green symptom screener screen or verbal confirmation
 - Get a pass to class
 - Move to class quickly following hallway and stairwell traffic flow



Proper PPE wear

- ❖ All school occupants are required to wear masks while on school campus
 - Mask must cover a person's nose and mouth at all times
 - Exceptions: When eating and drinking
 - Reminder - bandana or bandana print masks are NOT permitted



Hallway Transition and Flow

- ❖ All school occupants will be asked to travel on the right side of the hallway, as it is posted with signage. To have more organized movement, hallways are marked so the flow of traffic is not constantly mixing.
- ❖ Stairwells are also marked to keep a consistent flow of traffic in the same direction
- ❖ Teachers will control the number of students that exit their classroom during transitions.
- ❖ Signs will be posted to display in and out entrances of classrooms and large areas such as the gym/auditorium, one way signs for the hallway, "sanitize here" stations, hand washing signs, as well as proper face mask directions.
- ❖ Students will be allowed to access the water fountains during school, however only to refill personal water bottles. Consuming water using the spigot by mouth will not be permitted as they will be covered. Only the filling station will be available.



Late Arrivals and Early Dismissals

- ❖ Students that arrive at school late will buzz into the main office room 135 and receive a tardy pass.
- ❖ Students will move to their cohort location in a safe and efficient manner.
- ❖ Parents that wish to pick up their student from school before 2:30 must buzz in from the front door and show their identification on camera. Once verified, the student will be called from class and meet the guardian outside of the building. Parents will not be permitted to enter the building.



Lunch and Recess

- ❖ For lunch, students will remain with their academic cohorts and will not be permitted to move among other groups or cohorts.
- ❖ Cohorts will have designated and staggered times to line up then walk to the cafeteria to retrieve lunches and move to recess. Students will return to their classroom to consume their lunch.
- ❖ During lunch, students are permitted to remove their masks once back in the classroom to eat. They must put their mask back on after eating and before moving about the class.



Restrooms

- ❖ Students should only use the bathroom designated for their grade level: 6th Grade (3rd Floor), 7th Grade (2nd Floor), 8th grade (1st floor) - All south side of the building during *core* classes.
 - Students that require wheelchair access bathrooms may use the bathroom on their current floor or the bathroom in the nurse's office
 - Gender neutral bathrooms (for staff and students) are located in the main hallway on the first floor
- ❖ All students should use the bathrooms near room 130 during their elective classes (north side of the building)
- ❖ Only two students are allowed inside of the student bathrooms at a time. Anyone waiting will form a line in the hallway against the wall and 3-6 ft apart.
- ❖ The middle stalls of all student bathrooms will be unavailable to preserve distance while using the stalls.



Going to the Nurse

- ❖ All students must have a pass to visit the nursing area.
- ❖ There is an isolation room that is in the nurse's suite. The room is separate from other cots and the waiting area, but is still located in a manner that the nurse can monitor and easily access the student.
- ❖ There is a working sink and restroom devoted to the nurse as well as an additional restroom for students.
- ❖ Parents will be notified if their student comes to the nurse exhibiting COVID symptoms



Dismissal

- ❖ RTD and school bus riders will dismiss separately from walkers and car riders.
- ❖ Dismissal will be supervised by Student Support Team to ensure students move safely and socially distanced while exiting the building.
- ❖ Students will be released at staggered times based on transportation and leave out of designated doors

Times:

2:15- RTD Bus riders (Exit Door 14 - 5th and Clermont)

2:20- 2nd & 1st Floor Walkers & Car riders
(2nd Floor - Doors 14 and 12 - 5th and Birch)
(1st Floor - Doors 2 and 3 -4th and Birch)

2:25- 3rd Floor Walkers and Car Riders(Doors 1 and 2)

2:30 -Students in MI classes (Exit Door 2- 4th and Clermont)

